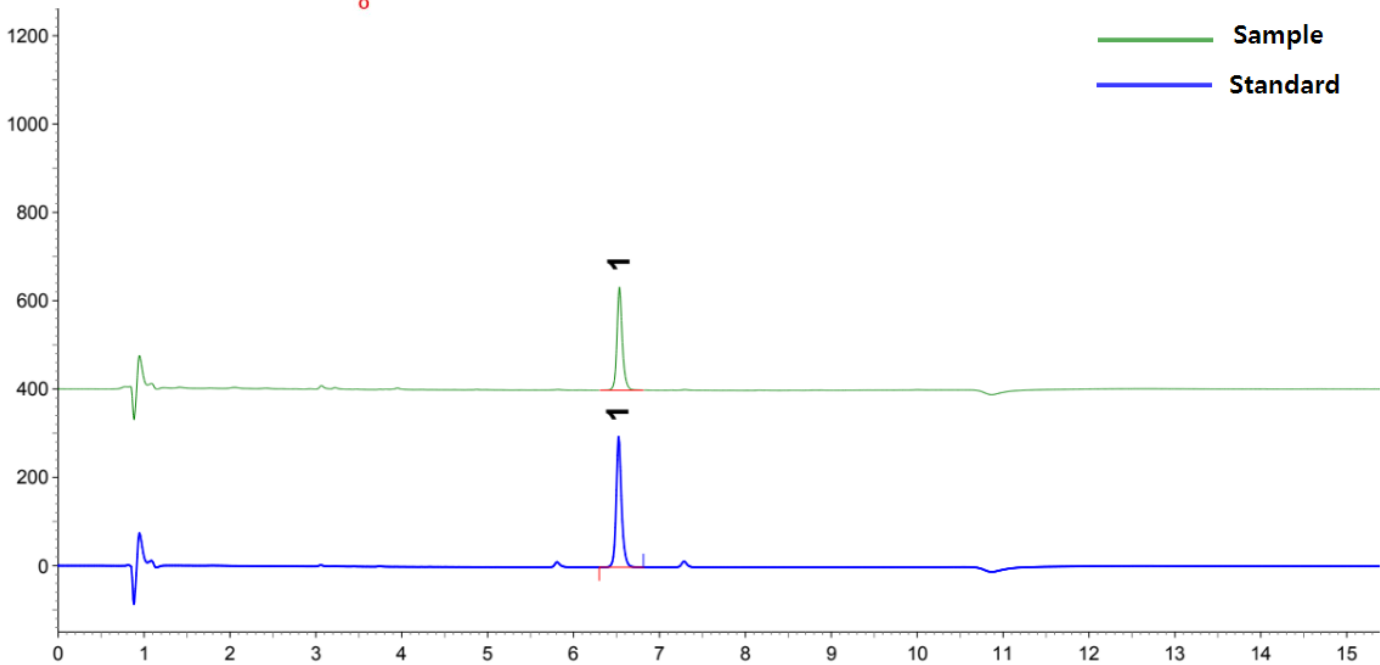
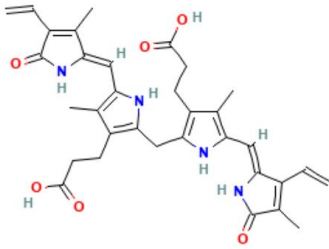


Bilirubin

빌리루빈

Capcellpak C18 MG II

1. Bilirubin
(1.25 µg/mL)



[HPLC Conditions]

Column	: Capcellpak C18 MG II (3.0 × 100 mm, 3 µm), Osakasoda, JAPAN
Mobile phase	: A: 100 mM Ammonium acetate B: 100 mM Ammonium acetate : ACN = 10 : 90 30-100%B (0-9min), 100-30%B (9-9.1min), 30%B (9.1-25min)
Flow rate	: 0.5 mL/min
Temperature	: 40°C
Detection	: PDA (450nm)
inj. vol.	: 5 µL (dissolved in DMSO : ACN = 50 : 50)