

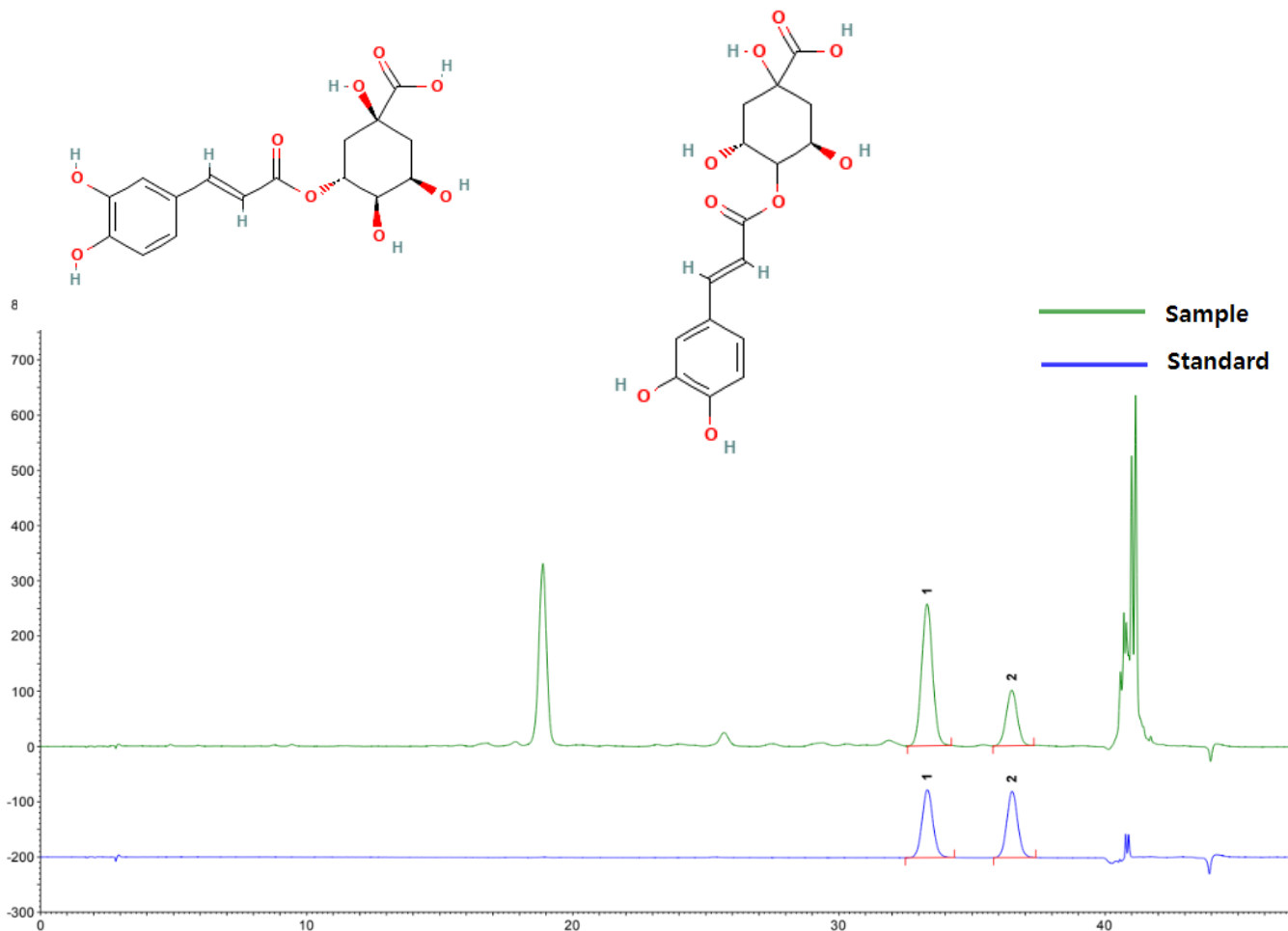
# Chlorogenic acid, Cryptochlorogenic acid

클로로겐산, 크립토클로로겐산

Capcellpak C18 UG120

## 1. Chlorogenic acid (50 µg/mL)

## 2. Cryptochlorogenic acid (50 µg/mL)



### [HPLC Conditions]

Column	: Capcellpak C18 UG120 (4.6 × 250 mm, 5 µm), OSAKA SODA, JAPAN
Mobile phase	: A : 0.1% Phosphoric acid B : MeOH 5%B (0-5min), 5-10%B (5-15min), 10-15%B (15-37min), 15-80%B (37-38min), 80%B (38-41min), 80-5%B (41-41.1min), 5%B (41.1-50min)
Flow rate	: 1 mL/min
Temperature	: 40°C
Detection	: PDA (326 nm)
Inj. vol.	: 5 µL (dissolved in 80%MeOH)