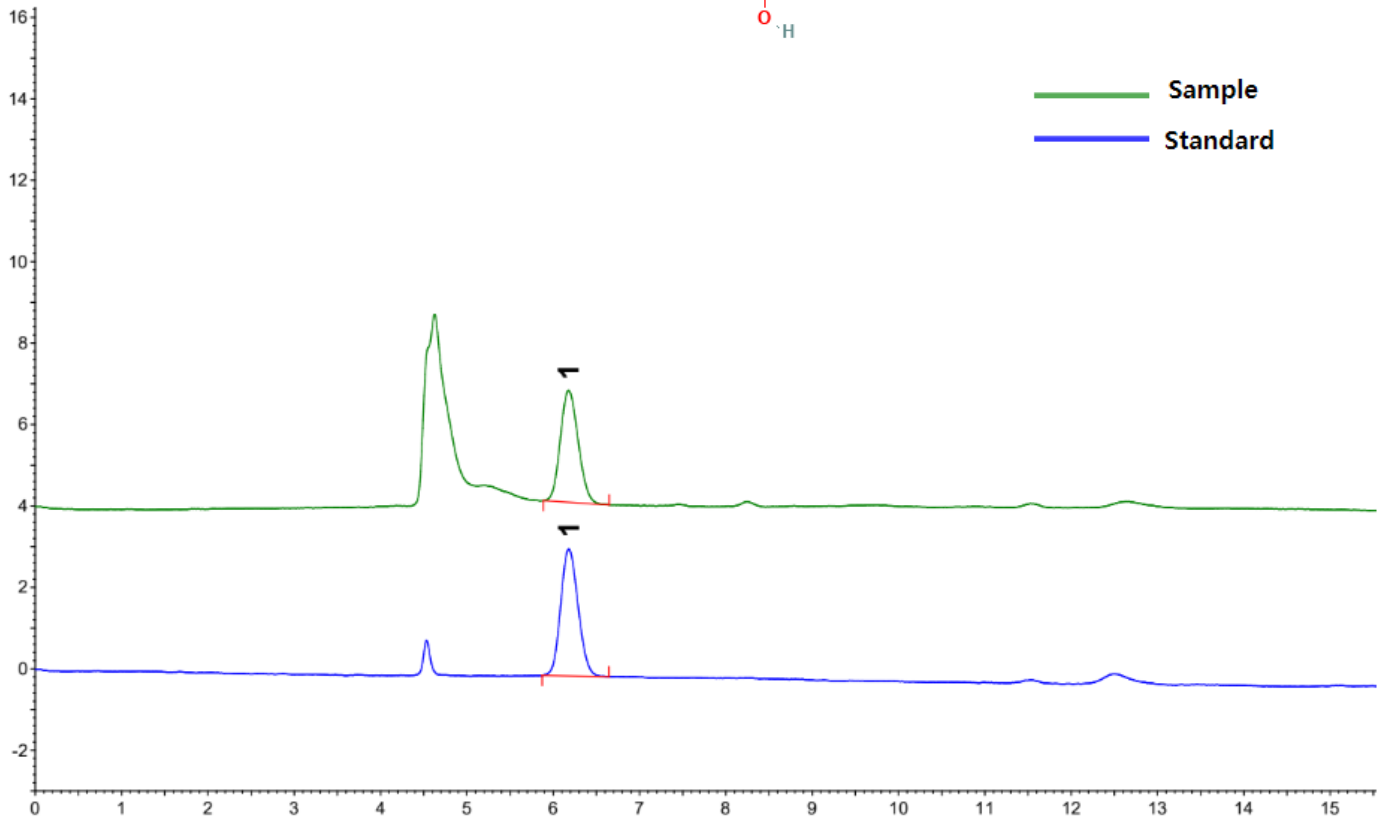
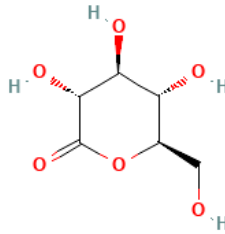


Glucono-Delta-Lactone

글루코노 델타 락톤

RSpak KC-811

1. Glucocno-Delta-Lactone (62.5 µg/mL)



[HPLC Conditions]

Column	: RSpak KC-811 (8.0 × 300 mm, 6 µm), Shodex, JAPAN
Mobile phase	: 3 mM HClO ₄
Flow rate	: 1 mL/min
Temperature	: 80°C
Detection	: PDA (210 nm)
Inj. vol.	: 10 µL (dissolved in 3 mM HClO ₄)