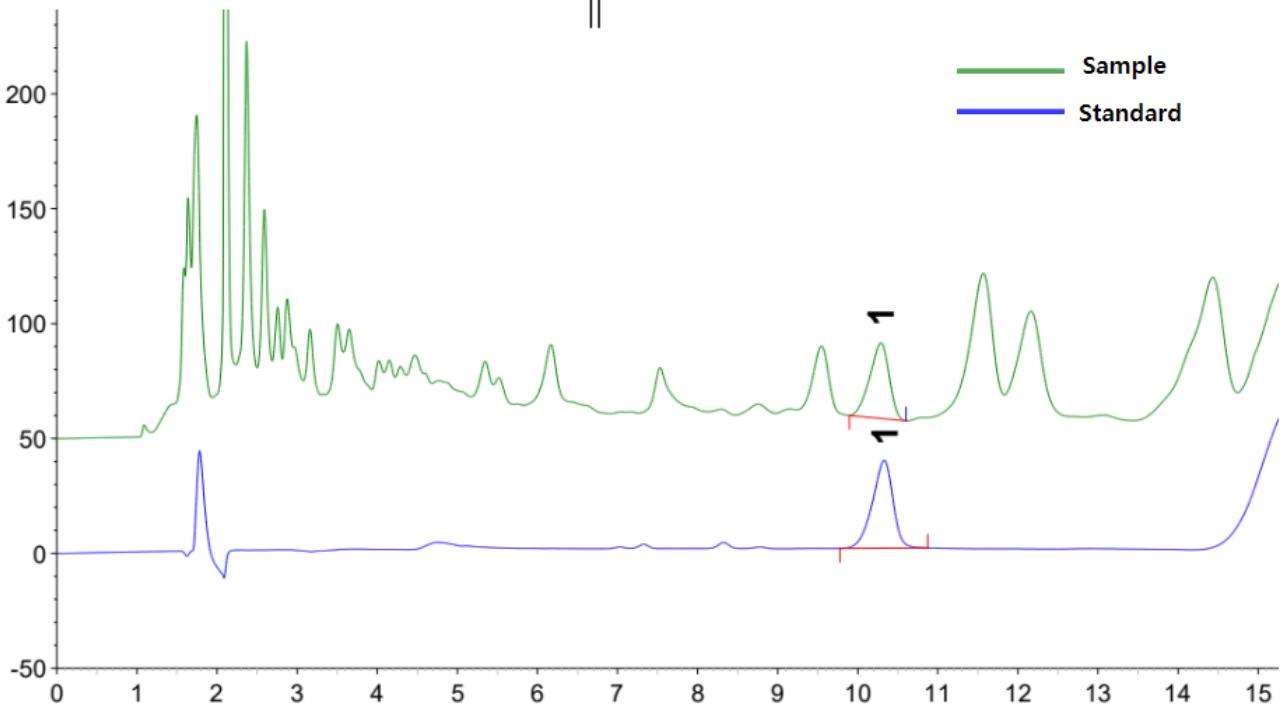
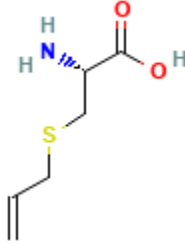


S-allyl-L-cysteine

마늘 농축액 중 S-알릴-L-시스테인

Scherzo SS-C18

1. S-allyl-L-cysteine (7.5 µg/mL)



[HPLC Conditions]

Column	: Scherzo SS-C18 (3.0 × 150 mm, 3 µm), IMTAKT, JAPAN
Mobile phase	: A : 0.1% Phosphoric acid B : 10mM NH ₄ H ₂ PO ₄ in DW / ACN (50:50) 50%B (0-11min), 50-100%B (11-12min), 100%B (12-15min), 100%B (15-15.1min), 50%B (15.1-30min)
Flow rate	: 0.4 mL/min
Temperature	: 35°C
Detection	: PDA (210 nm)
Inj. vol.	: 2 µL (dissolved in 30% MeOH)