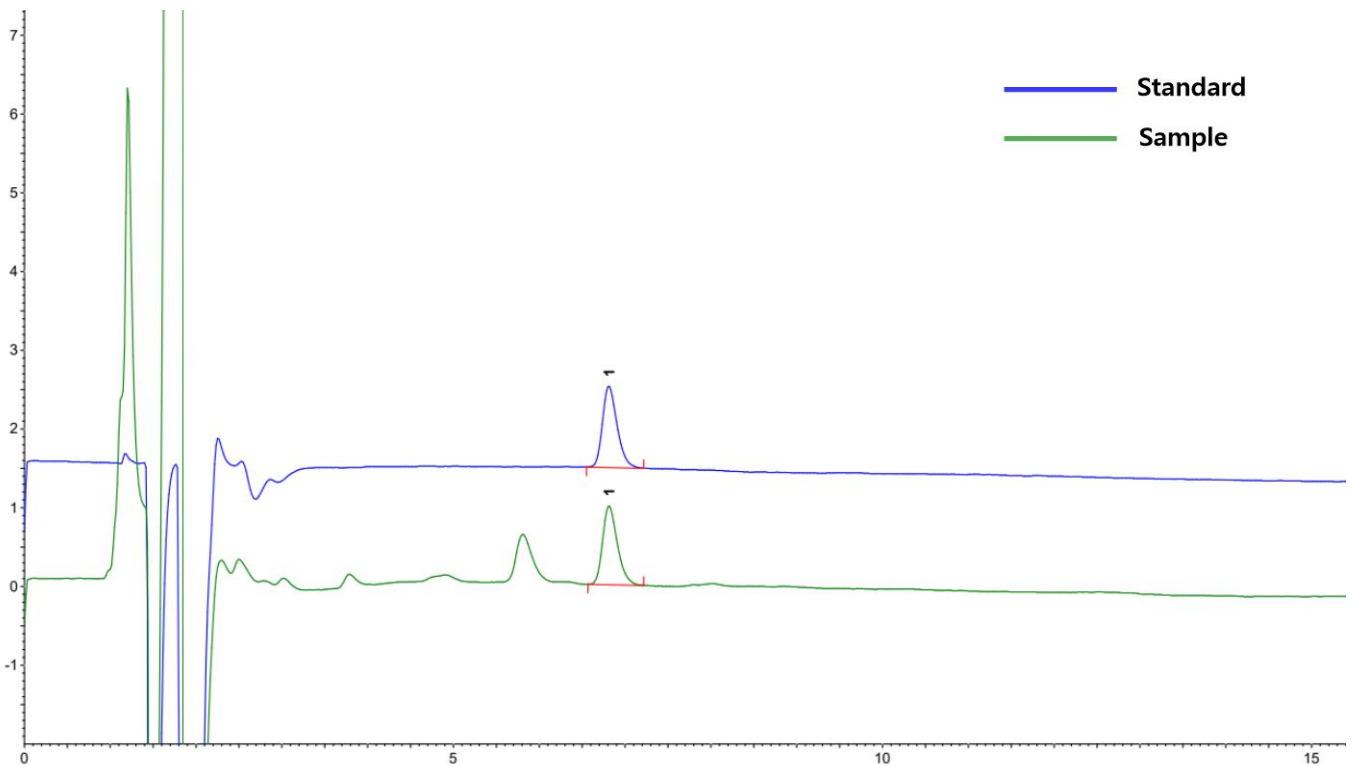
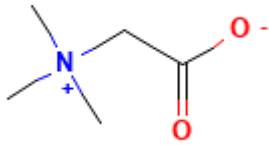


Betaine

베타인

CAPCELL PAK SCX UG80

1. Betaine
(99.042 $\mu\text{g/mL}$)



[HPLC Conditions]

Column	: CAPCELL PAK SCX UG80 (4.6 × 150 mm, 5 μm), Osakasoda, JAPAN
Mobile phase	: 5mM KH_2PO_4 (pH 2.5, adjusted with phosphoric acid) / MeOH (9 : 1)
Flow rate	: 1.0 mL/min
Temperature	: 40°C
Detection	: RID
Inj. vol.	: 10 μL (dissolved in DW)