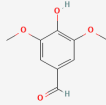


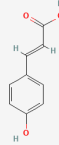
4 types of polyphenols

폴리페놀 4종

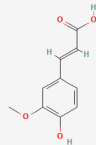
1. Syringaldehyde
(50 µg/mL)



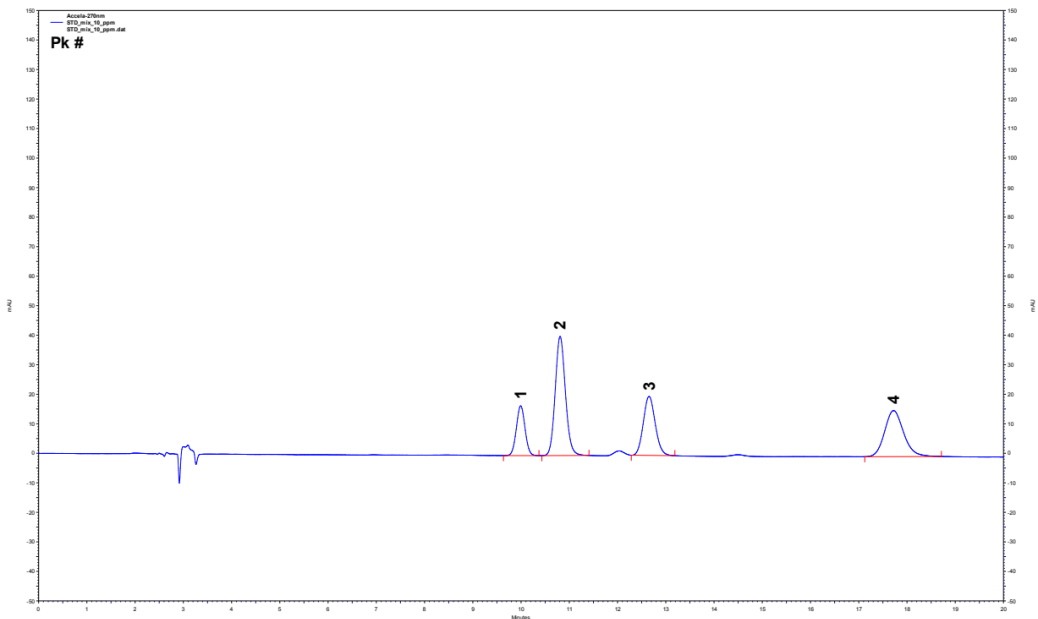
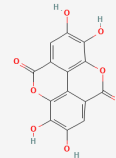
2. p-Coumaric acid
(50 µg/mL)



3. trans-Ferulic acid
(50 µg/mL)



4. Ellagic acid
(50 µg/mL)



[HPLC Conditions]

System	: NANOSPACE SI-2, OSAKA SODA, JAPAN
Column	: CAPCELL PAK C18 UG120 (4.6 × 250 mm, 5 µm), OSAKA SODA, JAPAN
Mobile phase	: 0.1% Phosphoric acid in D.W / ACN / MeOH (77 : 11.5 : 11.5)
Flow rate	: 1 mL/min
Temperature	: 35°C
Detection	: PDA (270 nm)
Inj. vol.	: 5 µL
Sample dissolved in	: 50% EtOH