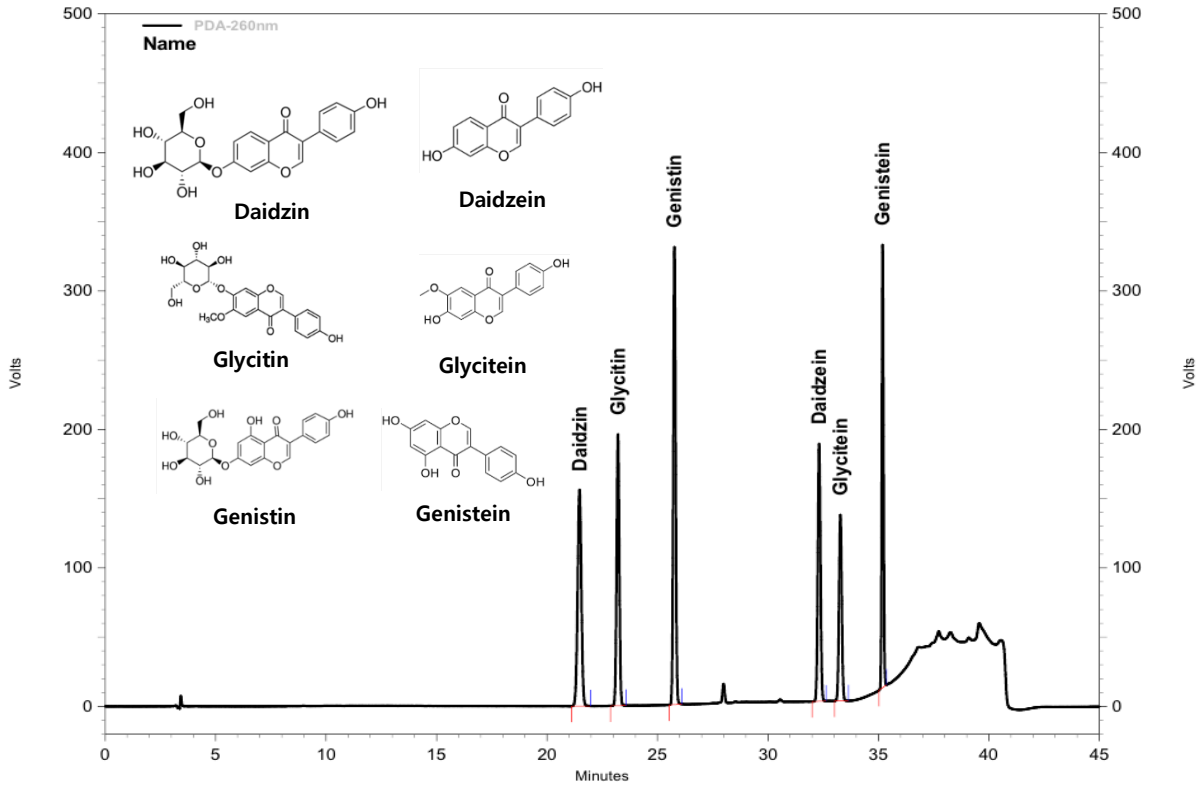


## Isoflavon 6종

## CapcellPAK MGII C18 4.6 x 250 mm, 5 μm



이동상 : A – DW / Acetic acid = 100 / 0.1

B – Methanol / Acetic acid = 100 / 0.1, Gradient

온도 : 40 °C

검출기 : PDA (260 nm)

주입량 : 10 μL

샘플 : 5 μg/mL

Time	Flow rate (μL/min)	B(%)	A(%)
Int.	800	25	75
15	800	25	75
25	800	50	50
30	800	55	45
33	800	80	20
37	800	80	20
37.1	800	25	75
45	800	25	75