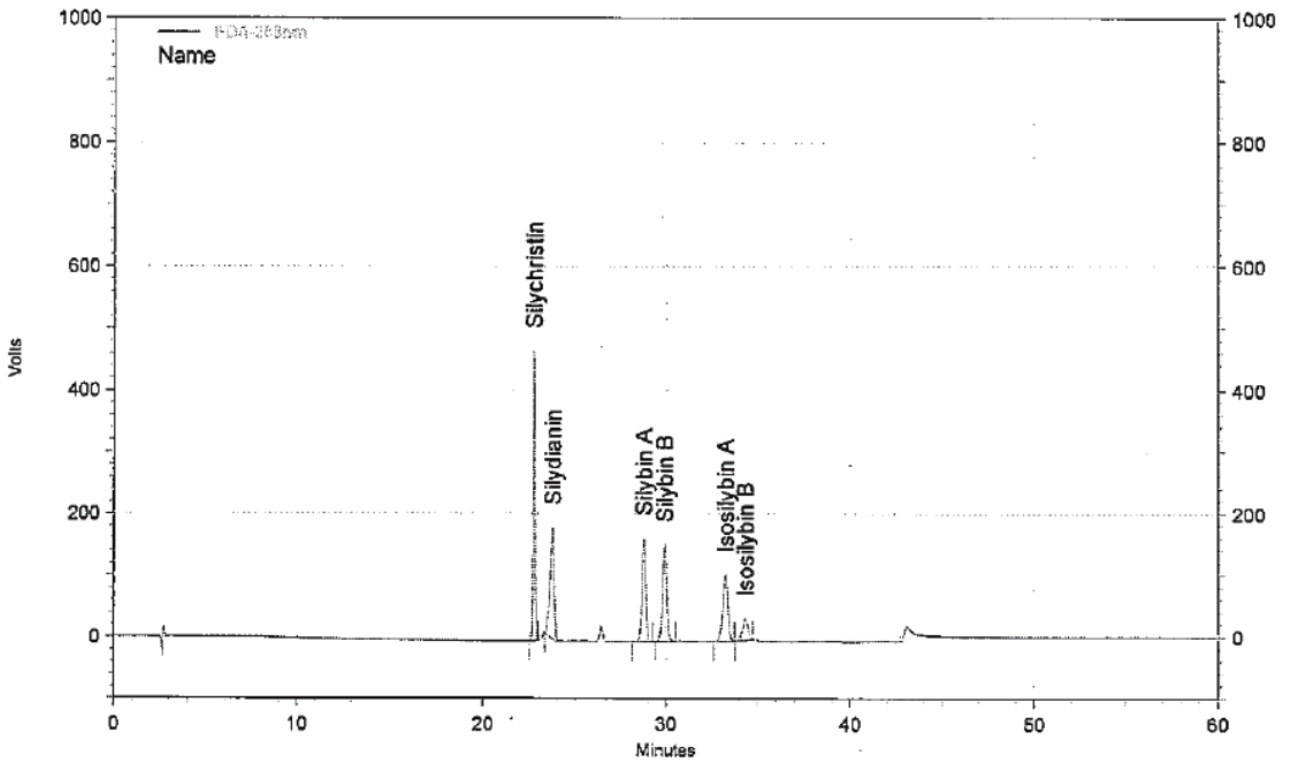


Silymarin

CapcellPAK MGII C18 4.6 x 250 mm, 5 μm

Silymarin: Silychristin, Silydianin, Silybin A, Silybin B, Isosilybin A, Isosilybin B



이동상 : A – DW / Phosphoric acid = 100 / 0.5

B – Methanol/ Phosphoric acid = 100 / 0.5 , Gradient

온도 : 40 °C

검출기 : PDA (288 nm)

주입량 : 5 μL

Time (min)	Flow rate (μL/min)	B (%)	A (%)
Int.	800	15	85
5	800	15	85
20	800	50	50
40	800	50	50
40.1	800	15	85
55	800	15	85