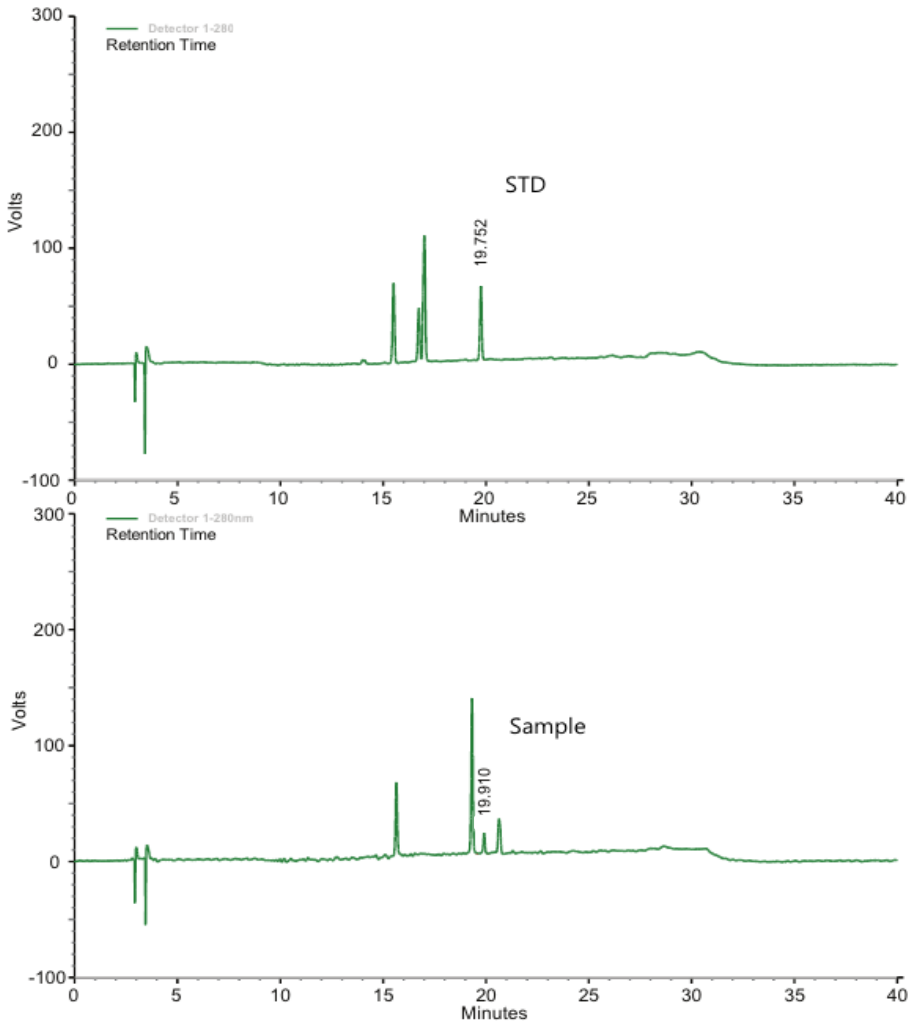


Epicatechin gallate

CapcellPAK MGII C18 4.6 x 250 mm, 5 μm



이동상 : A – DW / Phosphoric acid = 100 / 0.1

B – Acetonitrile, Gradient

온도 : 40 °C

검출기 : PDA (280 nm)

주입량 : 5 μL

Time (min)	Flow rate (μL/min)	B (%)	A (%)
Int.	1000	5	95
5	1000	5	95
25	1000	40	60
27	1000	5	95
40	1000	5	95