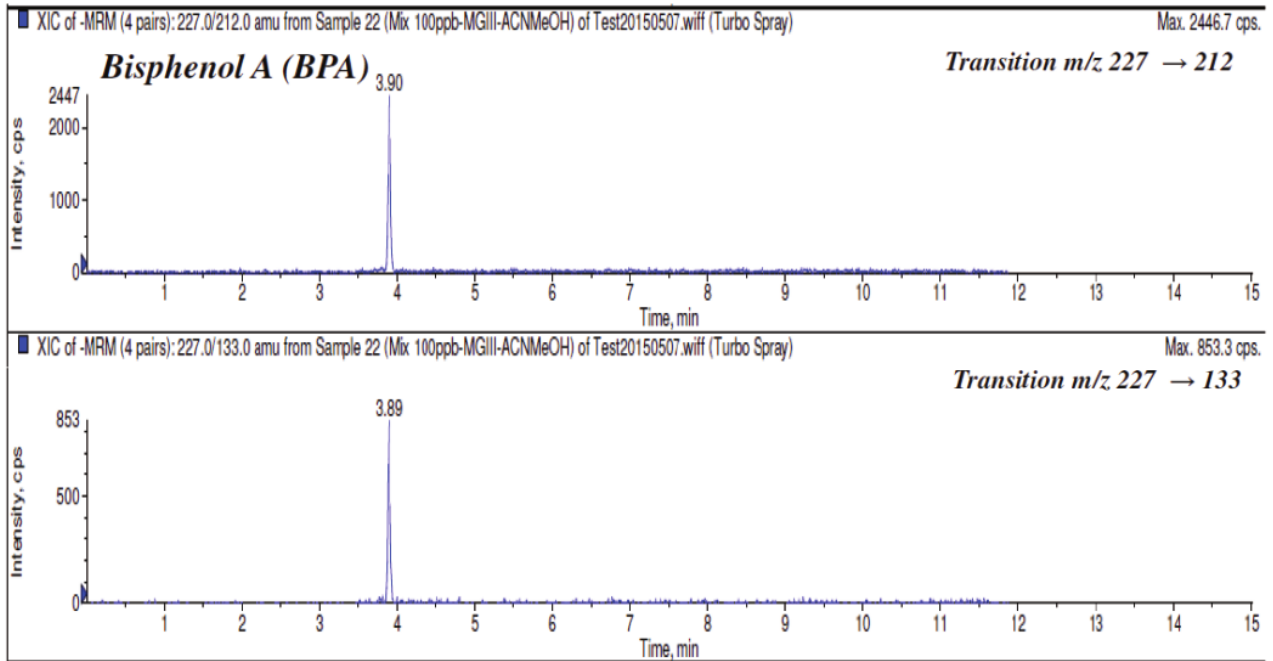


Bisphenol A

CapcellPAK MGIII, C18 2.0 x 100 mm, 3 μm



| Bisphenol A | | | |
|-------------|--|-------|-------|
| 컬럼 | OSAKA SODA CapcellPAK MGIII, C18, 2.0 x 100 mm, 3 μm | | |
| 이동상 | A -5 mM Ammonium formate | | |
| | B - Methanol / Acetonitrile = 50 / 50 | | |
| Gradient | | | |
| Time (min) | Flow rate (mL/min) | B (%) | A (%) |
| Initial | 0.3 | 20 | 80 |
| 1.5 | 0.3 | 20 | 80 |
| 2.0 | 0.3 | 85 | 15 |
| 10.0 | 0.3 | 90 | 10 |
| 10.1 | 0.3 | 20 | 80 |
| 15 | 0.3 | 20 | 80 |