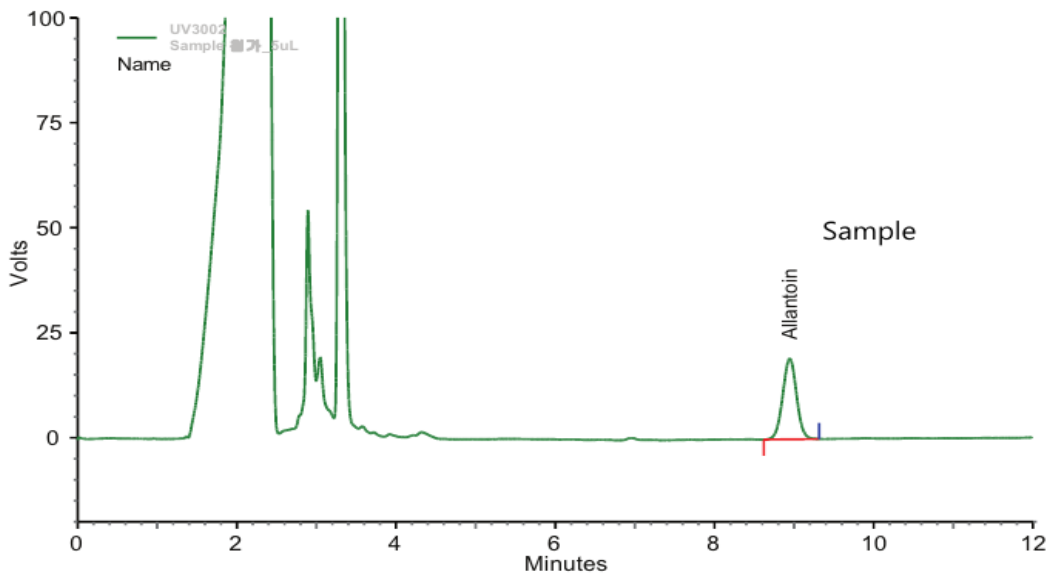
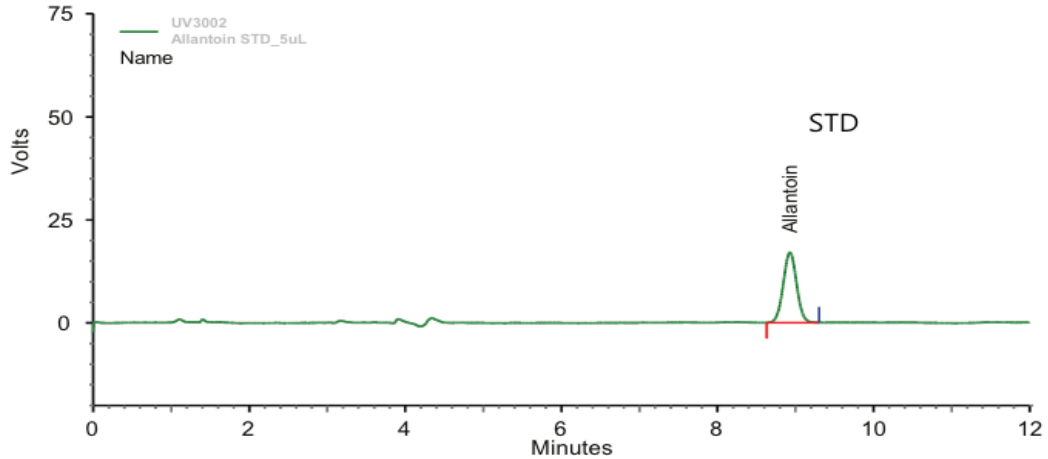


Allantoin

CapcellPAK PC HILIC 4.6 x 250 mm, 5 μm



이동상 : DW / Acetonitrile = 3 / 97

온도 : 40 °C

유속 : 1 mL/min

검출기 : PDA (210 nm)

주입량 : 5 μL

Sample 전처리: Sample 을 일정량 달아 증류수를 넣어 녹인 후 15 min Sonication.
원심분리한 후 0.45 μm Syringe filter 하여 분석